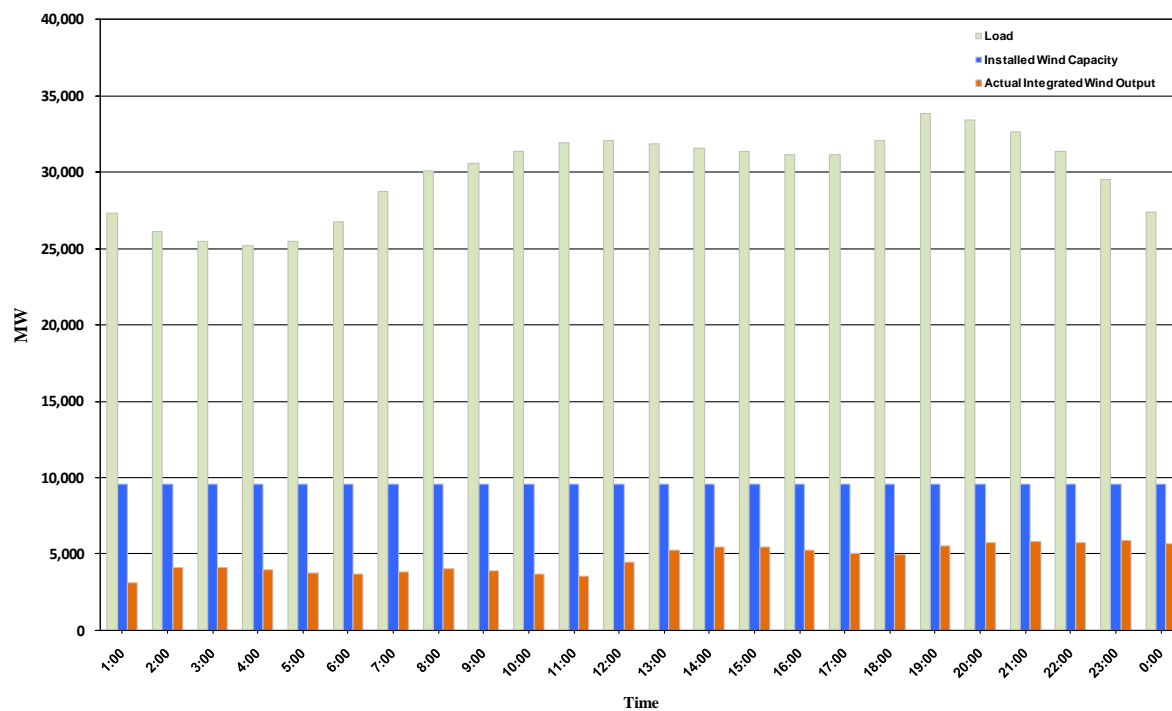




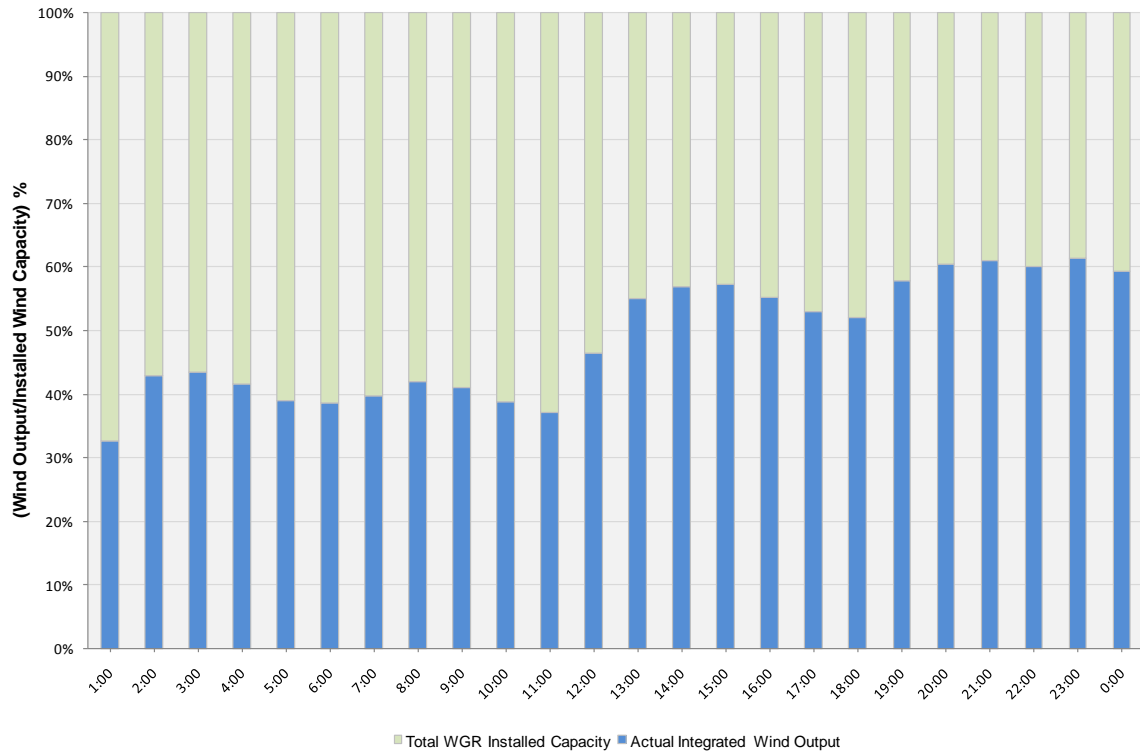
## ERCOT Grid Operations Wind Integration Report: 12/29/10

Peak Load	<b>33,865MW</b>
Load Peak Hour	<b>19</b>
Wind Record 12/11/10	<b>7,227 MW</b>
Max Wind Value	<b>6,047 MW</b>
Wind Peak Hour	<b>22:16:00</b>
Wind Integration %	<b>20.14</b>

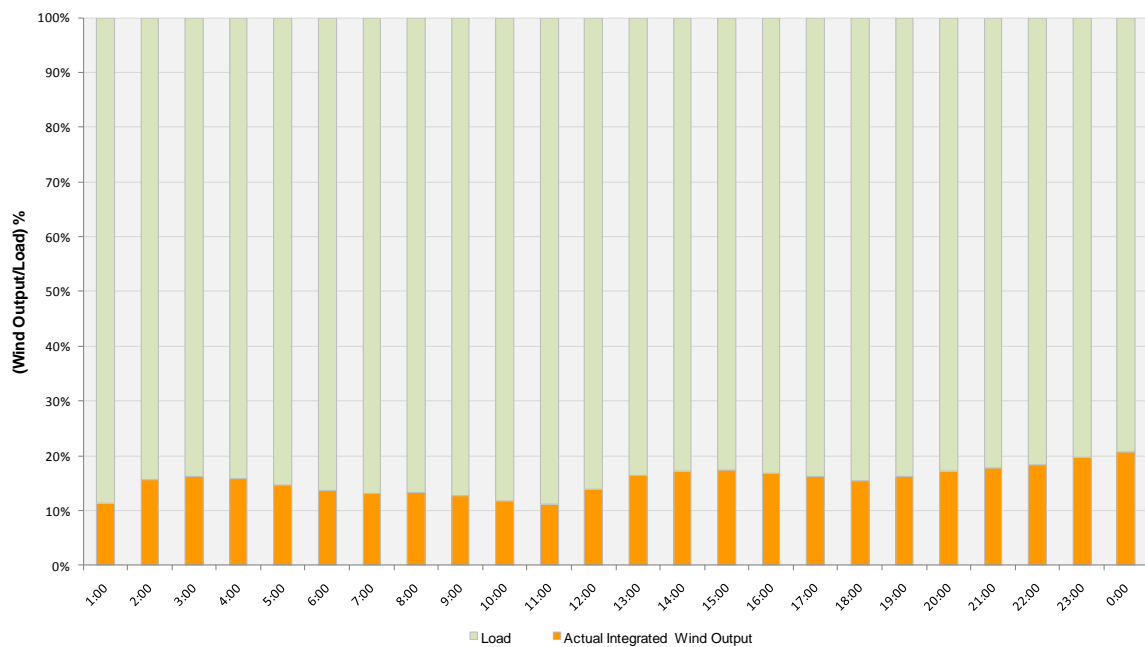
Hourly Average Actual Load vs. Actual Wind Output  
12-29-2010



**Actual Wind Output as a Percentage of the Total Installed Wind Capacity**  
**12-29-2010**



**Actual Wind Output as a Percentage of the ERCOT Load**  
**12-29-2010**



**ERCOT Load vs. Actual Wind Output 12/22/10 - 12/29/10**